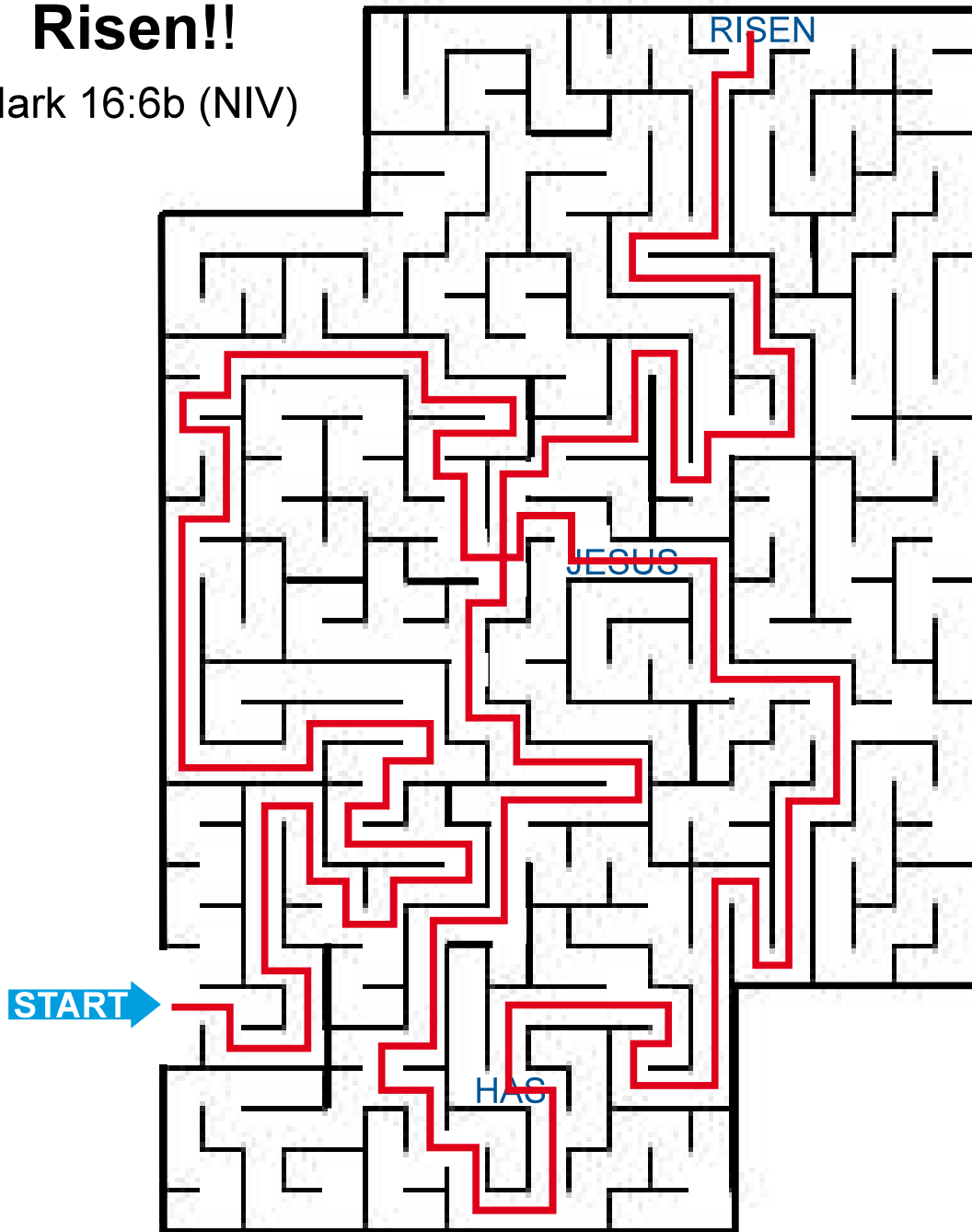


Jesus Has Risen Word Maze

Find your way from the start of the maze and connect the words from the answer phrase in their correct order.

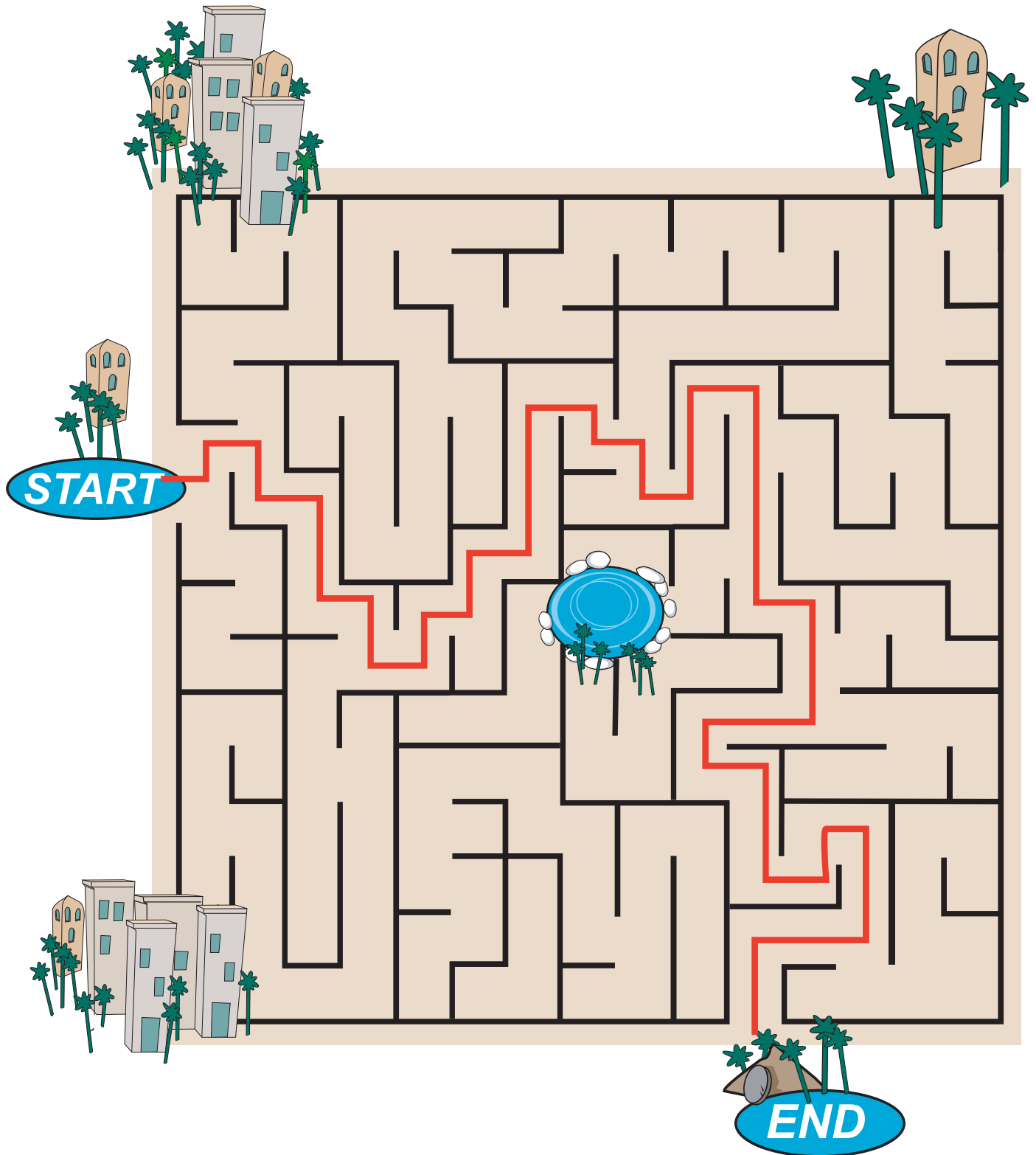
Jesus Has Risen!!

Mark 16:6b (NIV)



Find Your Way to Jesus' Tomb

Go with Mary Magdalene through Jerusalem to find Jesus' tomb. Do not cross any lines.





Jesus Is Alive! Word Search

Find the words on the list that are hidden in the puzzle.
The words can be right to left, up and down or diagonally.

I T N I A T B H E N I S M J D
T I O N L E D E U G I A M E E
P A I Q I A T A O N S E C S E
E U E D V L O R N D E L I U U
T R I T E U F E U G A I T S U
E A O R E M O L O R E I T E R
R U M I N E N M R E T L T V E
L I S I T N U A L A F A S I D
U N E A S T E R A T U E R I J
L O R E R S E Y T E M D I T O
N U L L A M C O N S E Q U I H
S T O N E Q U I S C I L L A N
D O E V E L E X E R I R I U R
L M O R E M A G D A L E N E R
S B M I N E N D R E T A T V E

ALIVE
ANGELS

EASTER
JESUS

JOHN
MAGDALENE

MARY
PETER

STONE
TOMB